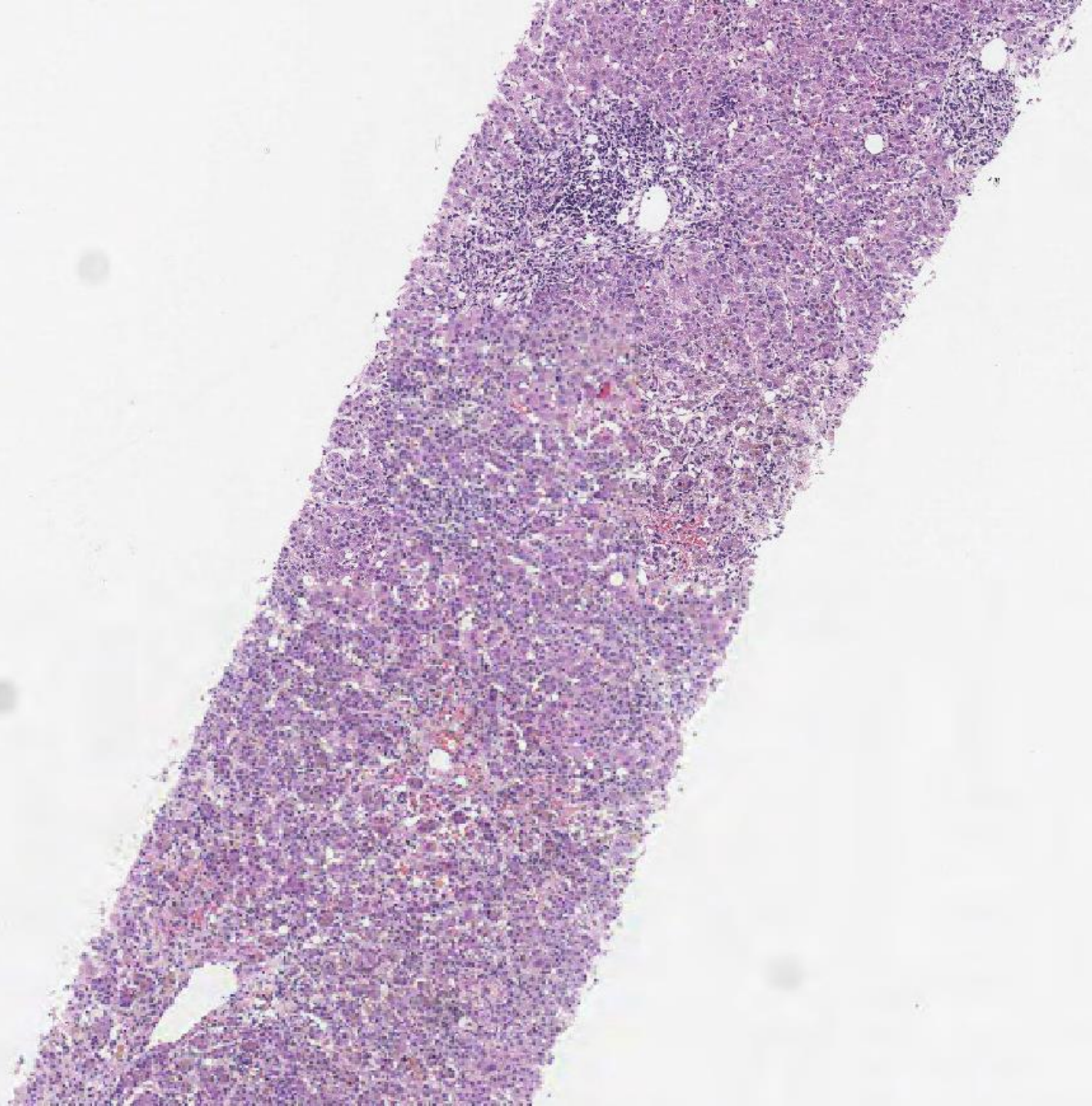


Case LS1 35F

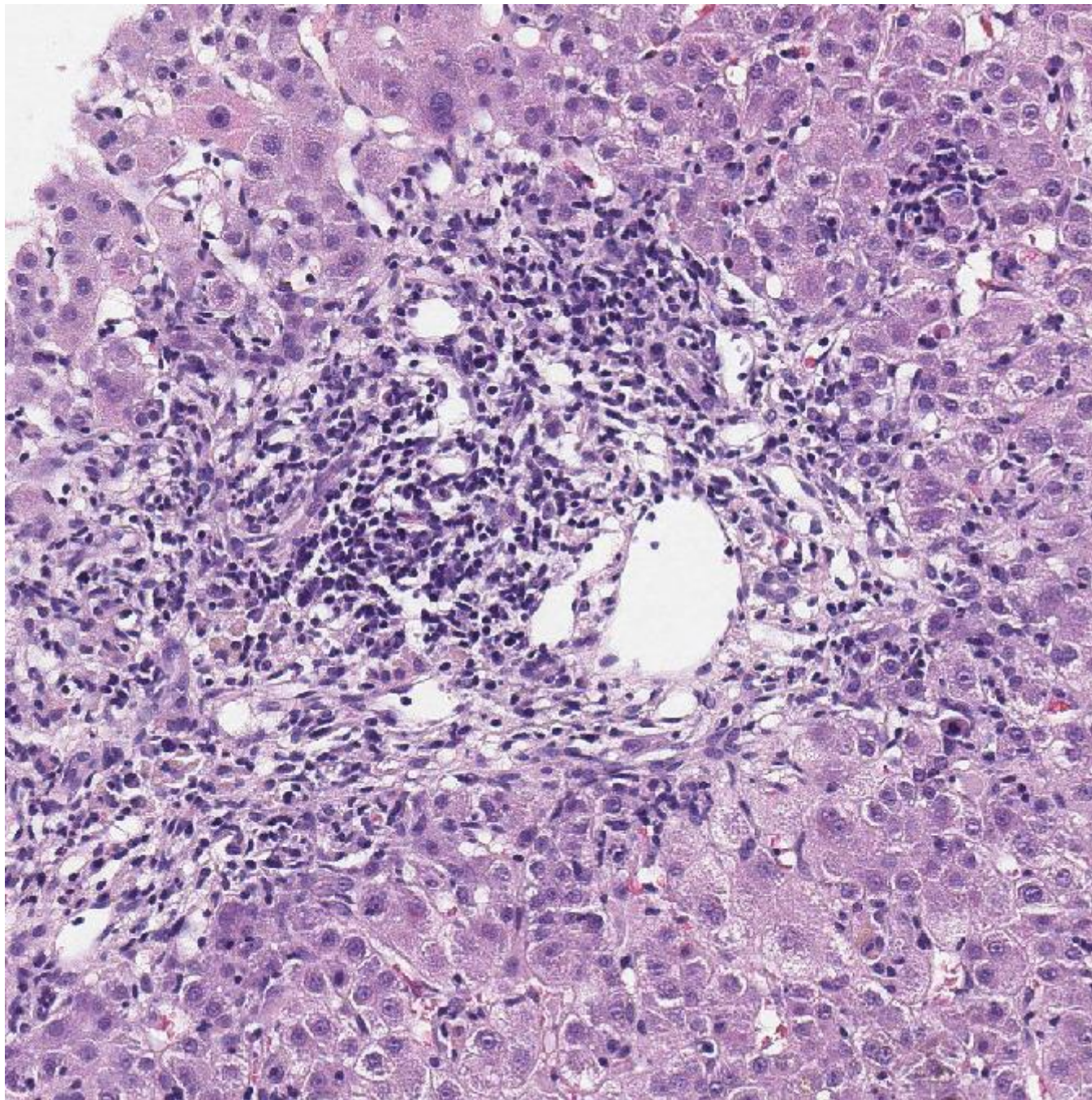
New onset severely deranged LFTs, no previous history. Admitted with severe jaundice and very deranged LFTs, ALT >1000 also retic, van Gieson, PASD



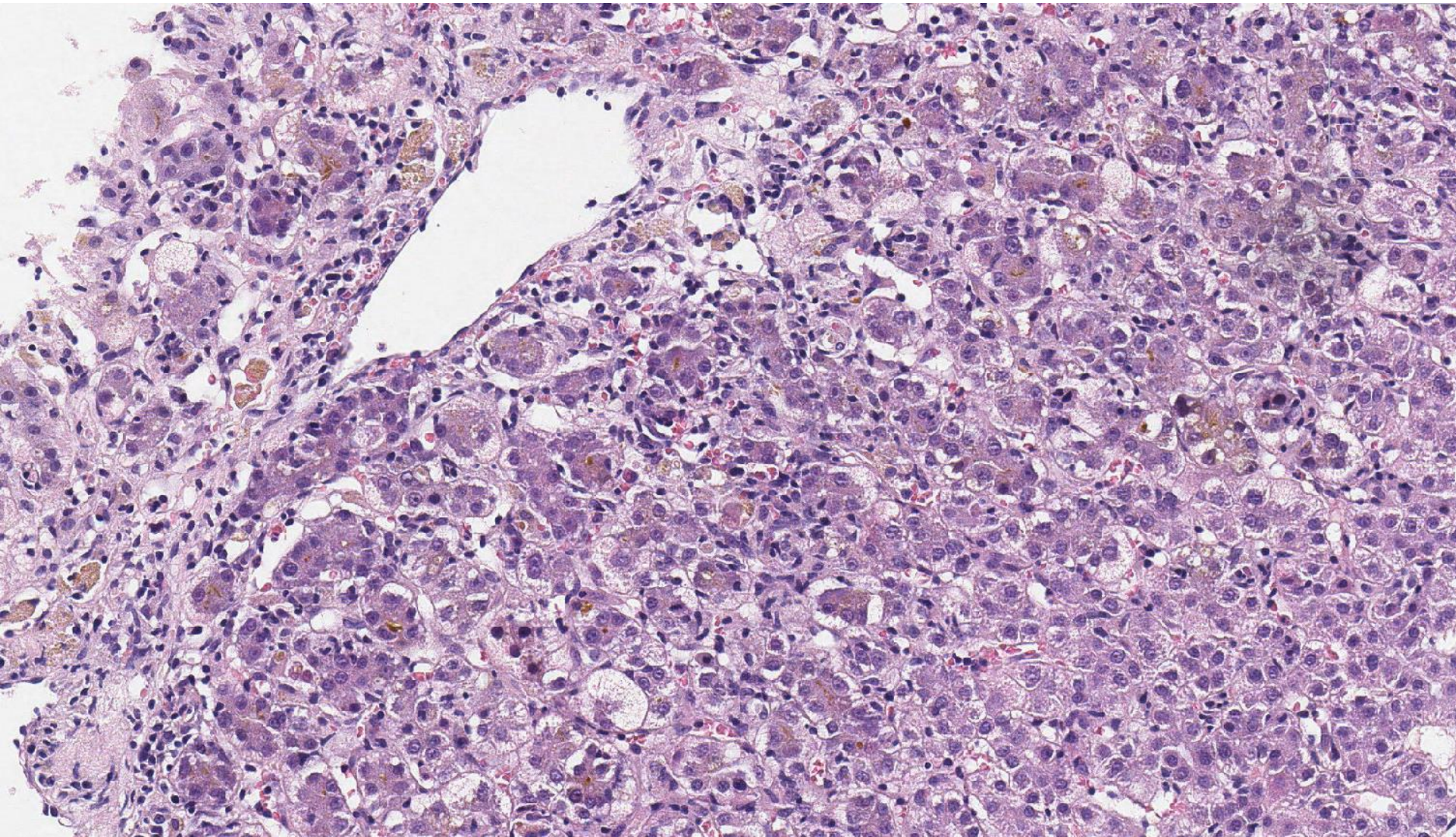
LS1



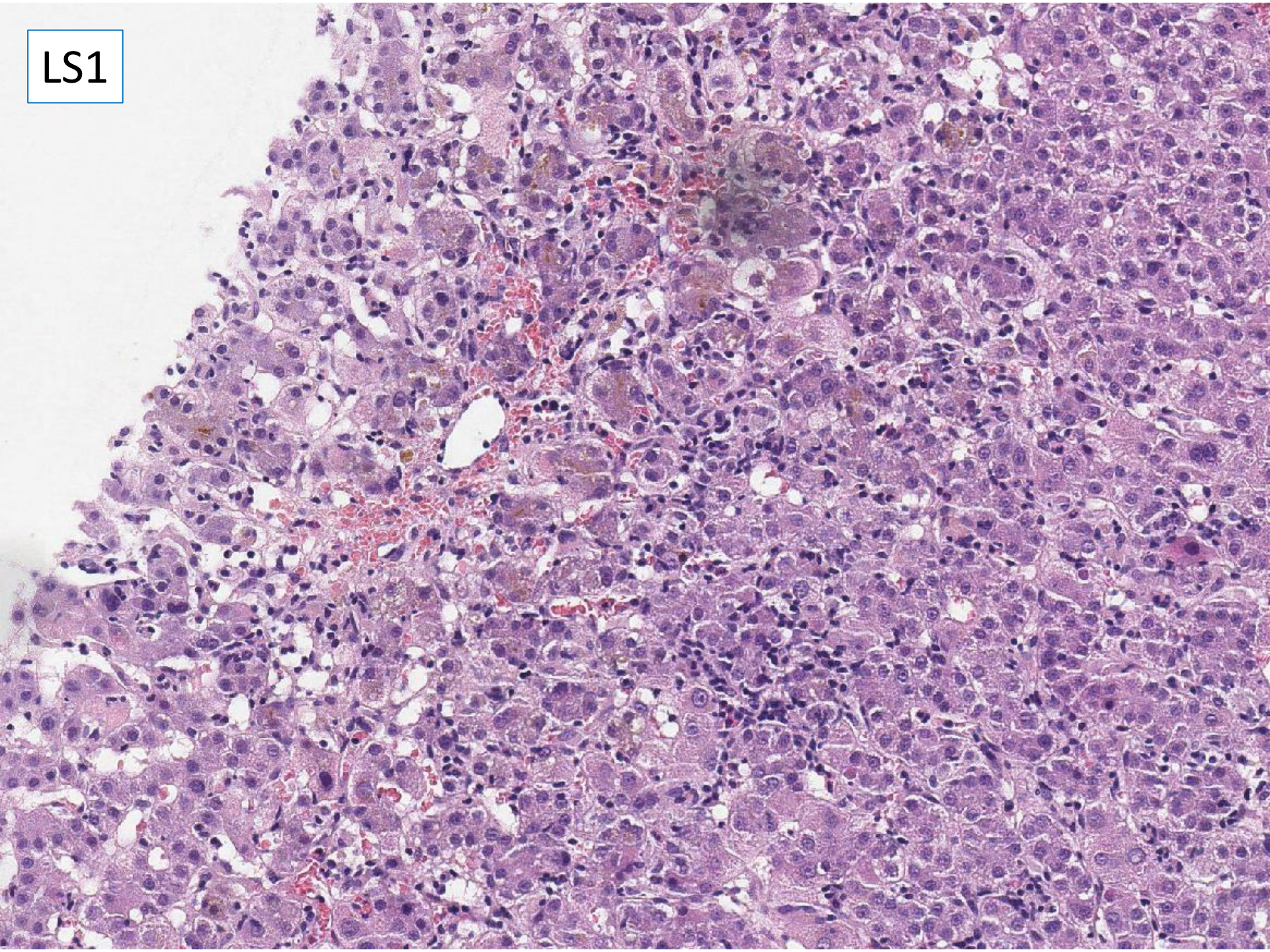
LS1



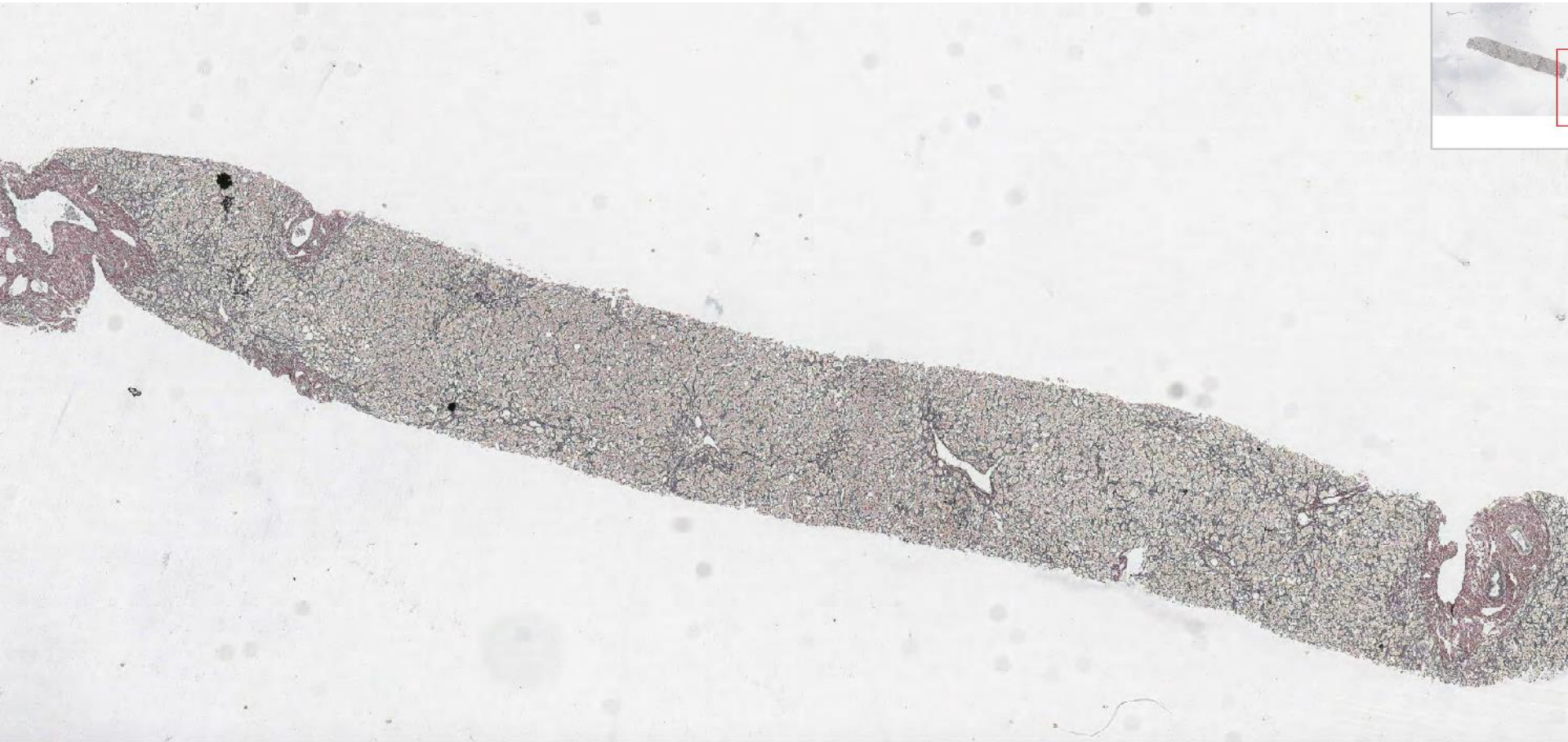
LS1



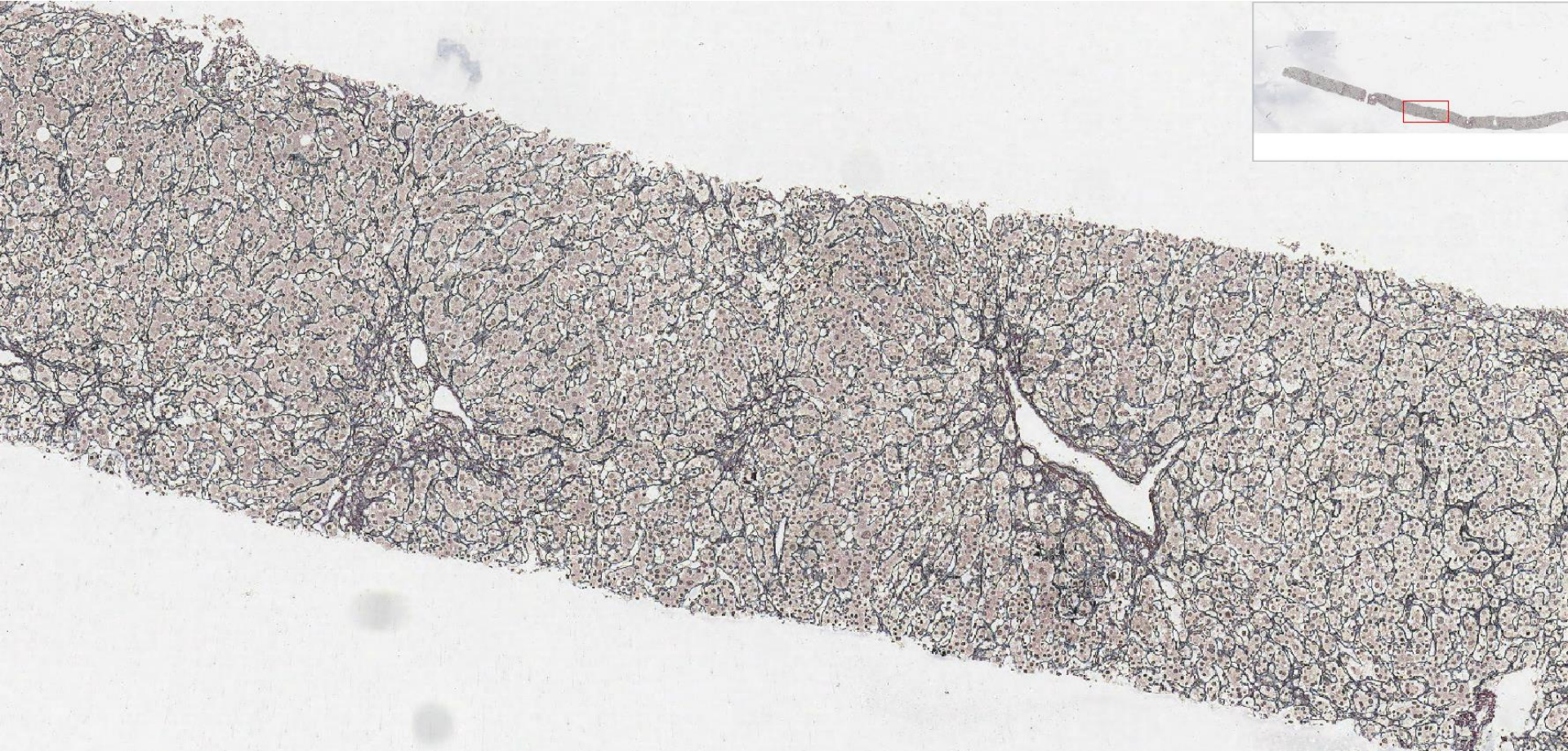
LS1



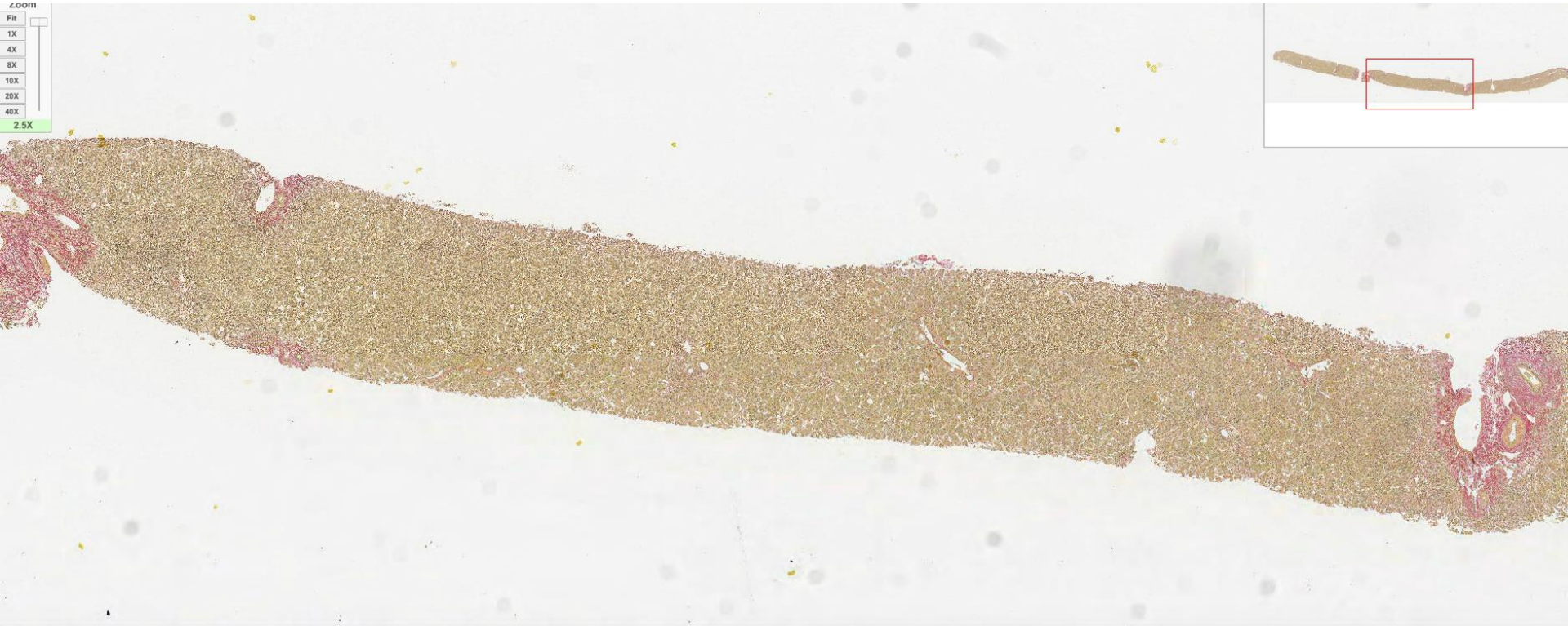
LS1



LS1

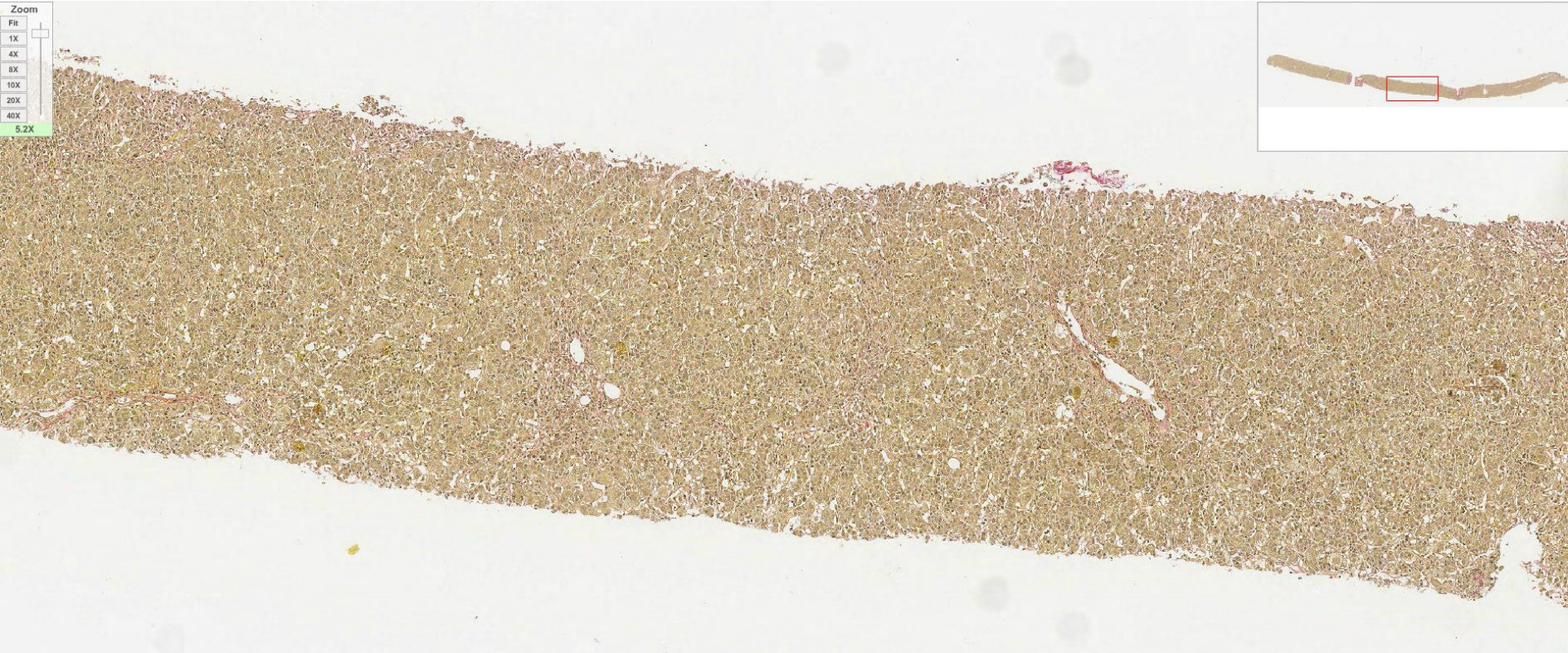


LS1

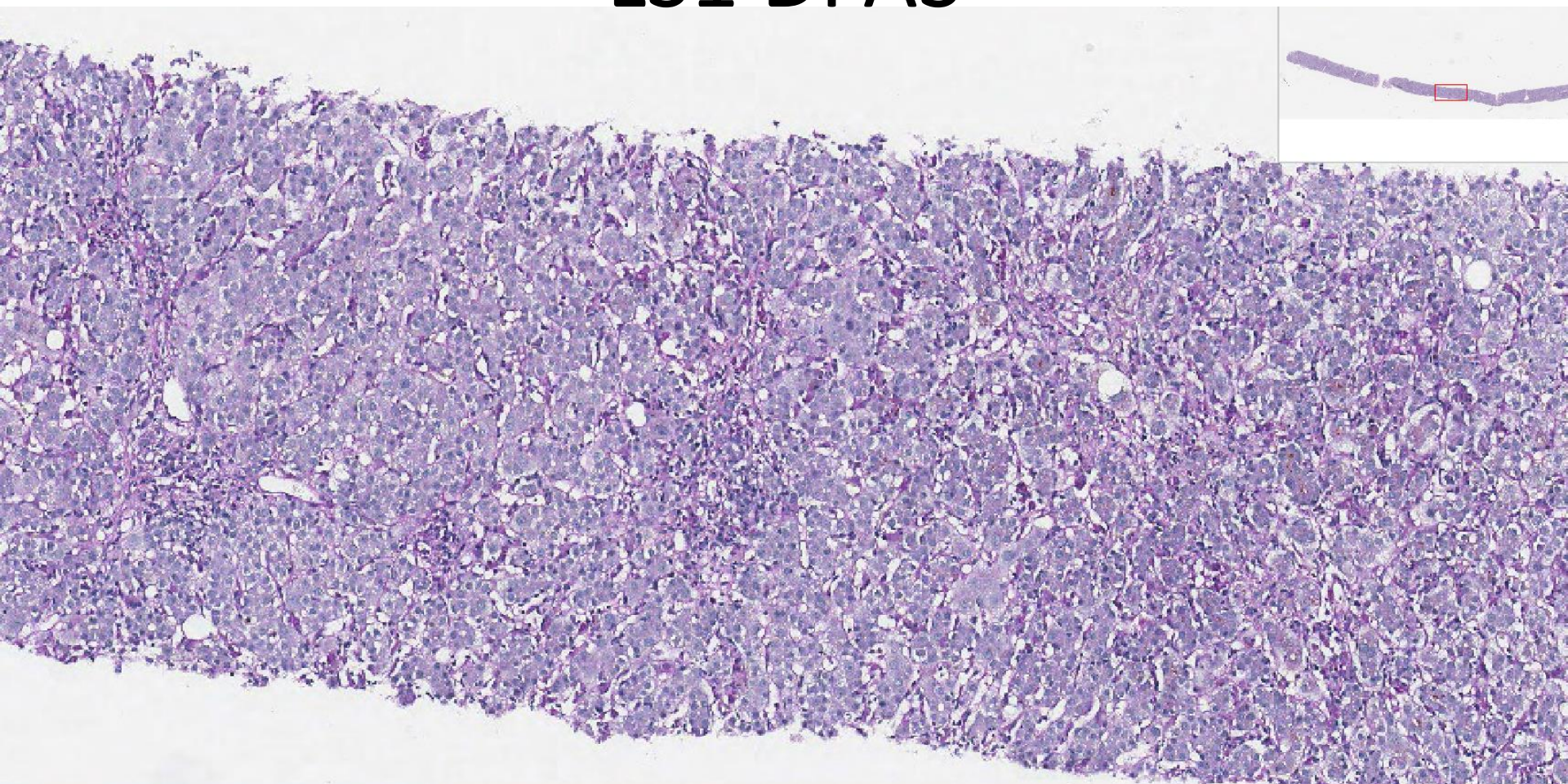


LS1

Zoom
Fit
1X
4X
8X
10X
20X
40X
5.2X



LS1 DPAS



Case LS1 35F

New onset severely deranged LFTs, no previous history. Admitted with severe jaundice and very deranged LFTs, ALT >1000
also retic, van Gieson, PASD

A	Chronic active hepatitis
B	Acute hepatitis
C	Sclerosing cholangitis
D	Hepatitis with bridging fibrosis
E	Autoimmune hepatitis